

# Agricultural Marketing Report

**Colorado  
State**  
University  
Cooperative  
Extension

Department of Agricultural and Resource Economics, Fort Collins, CO 80523-1172

October 2004-AMR 04-04

## **The 2002 Census of Agriculture: An Overview of Changes in U.S. and Colorado Farm Structure**

By

Wendy Umberger

Assistant Professor and Extension Agribusiness Economist  
Department of Agricultural and Resource Economics  
Colorado State University

✓ From 1997 to 2002, the number of farms in the United States *increased* by 11.4%.

✓ In 2002, the average U.S. farm size was only 441 acres, 10% smaller than the average farm size in 1992.

✓ From 1992 to 2002 the total number of farms in Colorado increased by 15.5%.

✓ In 2002, the average Colorado farm size was 991 acres, 20.8% smaller than in 1992.

An evaluation of the 2002 Census of Agriculture data released in June 2004 indicates some interesting changes in the structure of agriculture and farms for both the United States and Colorado. There are various definitions of “farm structure”, but two characteristics that are usually discussed when evaluating farm structure are the number of farms and the size of farms. This fact sheet provides a brief discussion on U.S. and Colorado farm numbers, farm size, organizational structure of farms, and primary occupation of farm operators based on data from the most recent 2002 Census of Agriculture.

### **The Number of Farms in the U.S. and Colorado**

The number of farms in the United States peaked in 1935 at 6.8 million farms. Increases in agricultural productivity and more off-farm employment opportunities were likely causes of the 66% decline in farms that occurred from 1935 to 1974. However, since 1974, the number of farms in the United States has tended to stay more constant, declining an average of 3.7% every 5 years from 1974 to 1997 (Figure 1). Conversely, the 2002 Census of Agriculture numbers indicate a break from the previous trend of declining U.S. farm numbers. From 1997 to 2002, the number of farms in the United States actually *increased* by 11.4%. Additionally, as Figure 1 indicates, since peaking in 1992, the average farm size (acres per farm) has declined. In 2002, the average U.S. farm size was only 441 acres, 10% smaller than the average farm size in 1992.

Historical changes in the total number of farms in Colorado from 1974 to 2000 have been somewhat different than the U.S. trends (Figure 2), although the most recent five-year changes have been similar. Since 1974, the number of farms in Colorado has been steadily increasing. During the ten years from 1992 to 2002 the total number of farms in Colorado increased by 15.5%. The average farm size in Colorado is much larger (more than double) the average size of U.S. farms. However, similar to the U.S. trend, the

average size of farms in Colorado has been declining since 1992 (Figure 2). In 2002, the average Colorado farm size was 991 acres, 20.8% smaller than in 1992.

### **Changes in the Percent of U.S. and Colorado Farms by Farm Size Category**

The Census of Agriculture also classifies farms into seven size categories based on their acreage. Figures 3 and 4 show the percent of U.S. and Colorado farms, respectively, by size category for Census of Agriculture years from 1974 to 2002. The increase in total number of farms and the decline in average farm size in the United States discussed above can be further explained by the 21% increase from 1997 to 2002 in the number of small farms ranging in size from 1 to 179 acres. The largest increase in farm size category from 1997 to 2002 was a 37.2% increase in the number of farms ranging in size from 10 to 49 acres. This size category also had the largest relative increase from 1992 to 1997. The numbers of farms fitting into size categories ranging between 180 to 1,999 acres have declined in the years between the 1992 and the 2002 Censuses of Agriculture.

It is also important to note the increase in the number of farms that fit the largest farm size category: farms with 2,000 acres or more. The number of farms fitting this large farm size category has been steadily increasing over the last century. From 1997 to 2002 the number of farms with 2,000 acres or more increased 4.5%.

When considering the increases in farm size categories it is also interesting to examine the market value of agricultural products sold and government payments by each size category (Figures 5 and 6). The 2002 Census of Agriculture numbers indicate that 24.7% of the market value of agricultural products sold is from farms ranging in size from 1 to 179 acres, 51.7% of the sales are from farms with 180 to 1,999 acres, and 23.7% of the sales are from farms with 2,000 acres or more. Thus, less than 5% of U.S. farms accounted for approximately 24% of the market value of agricultural products sold in 2002. Additionally, in 2002, over one-half, 57.8%, of all U.S. farms had sales of \$10,000 or less per year.

Changes in the percent of Colorado farms composing each of the seven size categories (Figure 4) differ somewhat from the U.S. trends. The number of farms falling into one of the four size categories of farms with less than 499 acres has been increasing since 1992. The size category of 10 to 49 acres had the largest percent increase in both the 1997 census and the 2002 Census of Agriculture. On the other hand, since the 1992 Census, the number of Colorado farms falling into one of the three size categories of farms with 500 acres or more has declined. Interestingly, however, in 2002 farms with more than 500 acres accounted for approximately 70% of Colorado agricultural sales, while farms with 499 acres or less only accounted for 30% of sales.

Other statistics such as the distribution of farms by type of organizational structure and distribution of principal farm operator by primary occupation are displayed in Figures 7-10. The Census of Agriculture data appears to contradict the often-perceived notion that the number of family farms is declining. As Figures 7 and 8 indicate, in both the United States and Colorado, the percent of farms owned by a family or an individual has actually increased slightly in the last ten years. It is also interesting to note the slight increase in the percent of principal farm operators whose primary occupation is farming in both the United States and Colorado (Figures 9 and 10).

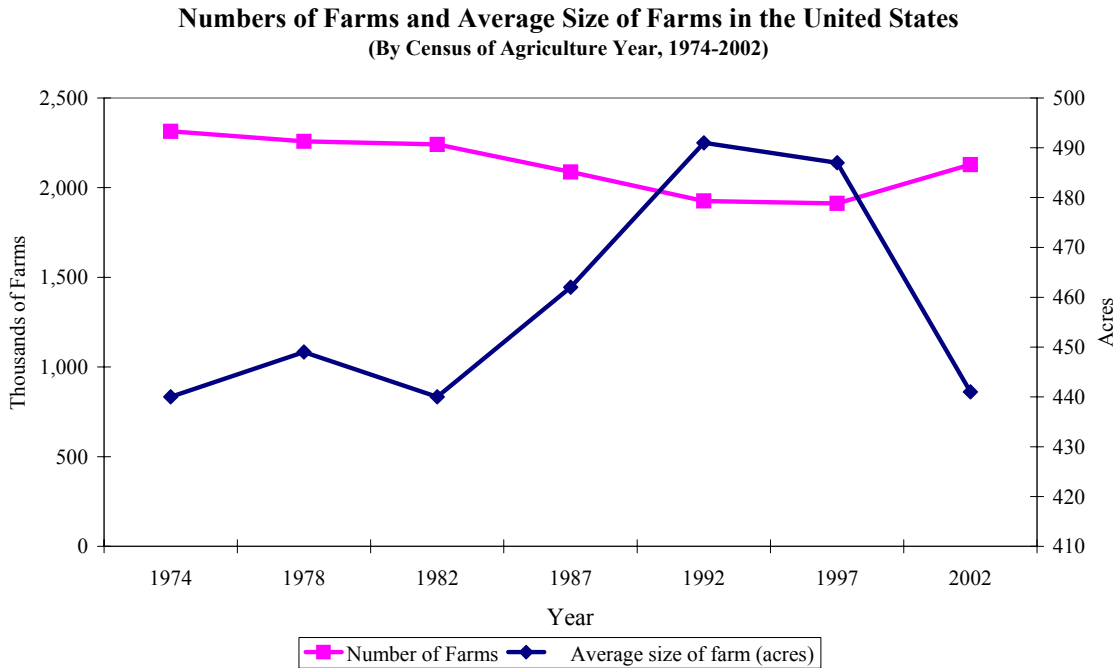
### **Summary**

The 2002 Census of Agriculture data indicates that the total number of farms in the United States and Colorado is increasing. However, in both the United States and Colorado, most of this increase in numbers is due to more small farms, particularly farms with only 10 to 49 acres. Therefore, in general, farms in both the United States and Colorado are getting smaller. However, these small farms with less than 180 acres accounted for a relatively small portion (only 25%) of the market value of agriculture in 2002. Most of the U.S. market value of agricultural production comes from farms that are greater than 1,000 acres in size.

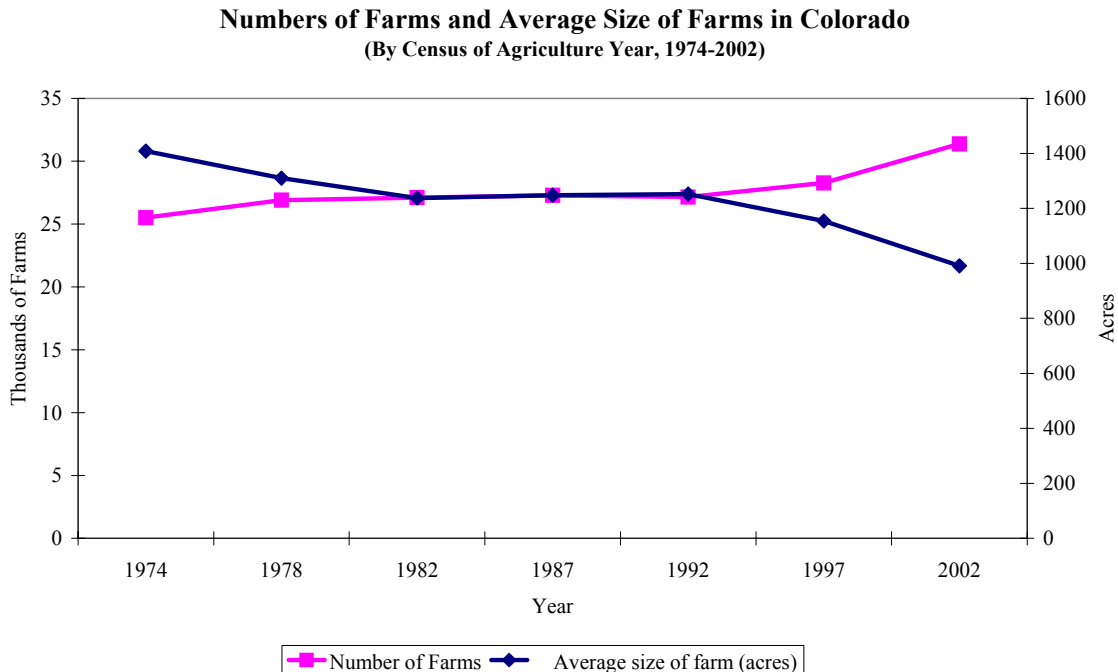
---

### Additional Information on U.S. Farm Structure

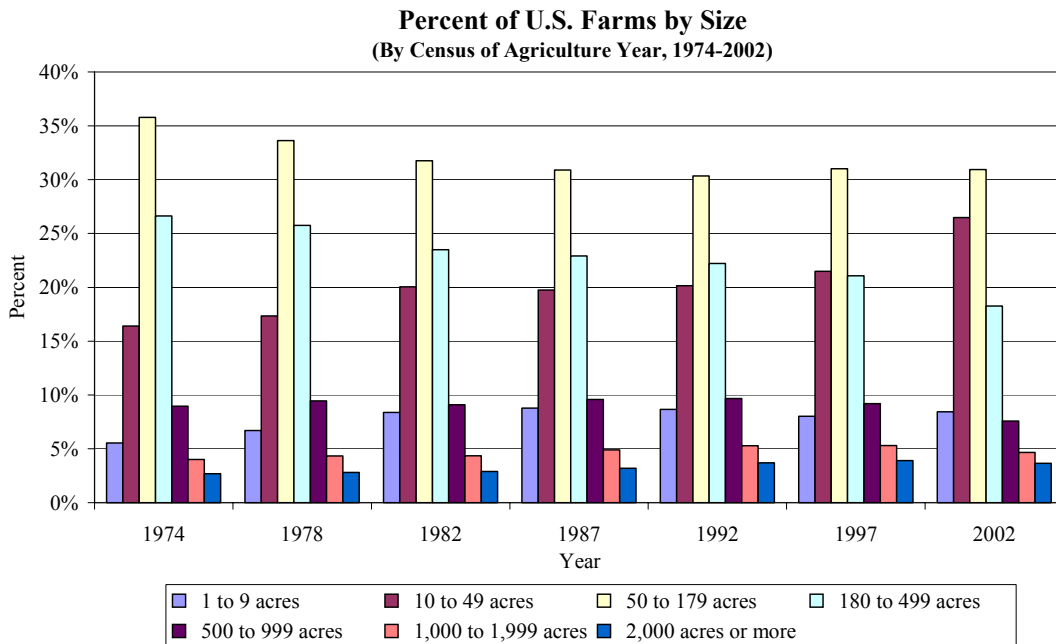
Additional information on farm structure for both the United States and Colorado is available on the USDA/NASS Census of Agriculture website at <http://www.nass.usda.gov/census/>. The USDA/ERS also provides an in-depth overview of farm structure using previous Census of Agriculture data. This information is available at <http://www.ers.usda.gov/Briefing/FarmStructure/>.



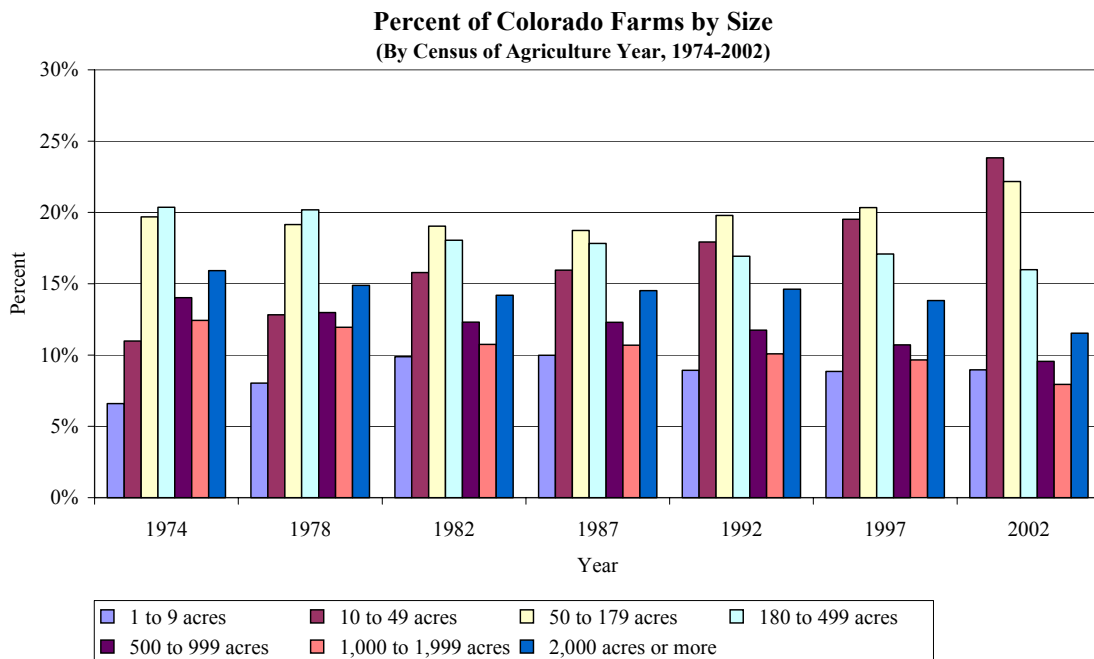
**Figure 1. Numbers of Farms and Average Size of Farms in the United States**



**Figure 2. Numbers of Farms and Average Size of Farms in Colorado**



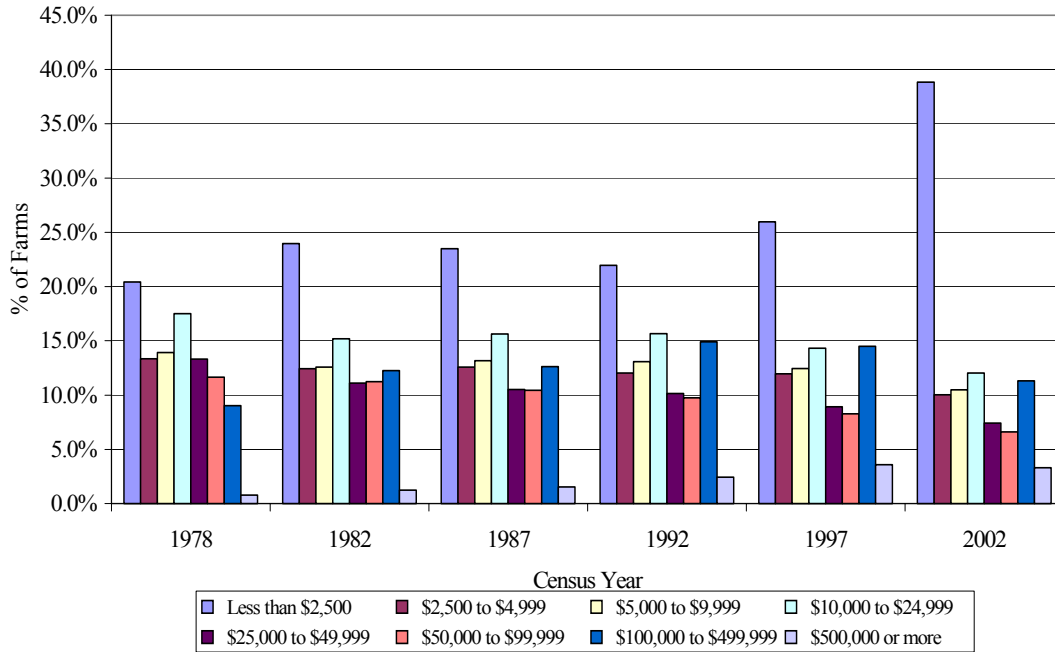
**Figure 3. Percent of U.S. Farms by Size Category**



**Figure 4. Percent of Colorado Farms by Size Category**

**Distribution of U.S. Farms by Value of Sales Category**  
**(By Census of Agriculture Year, 1978-2002\*)**

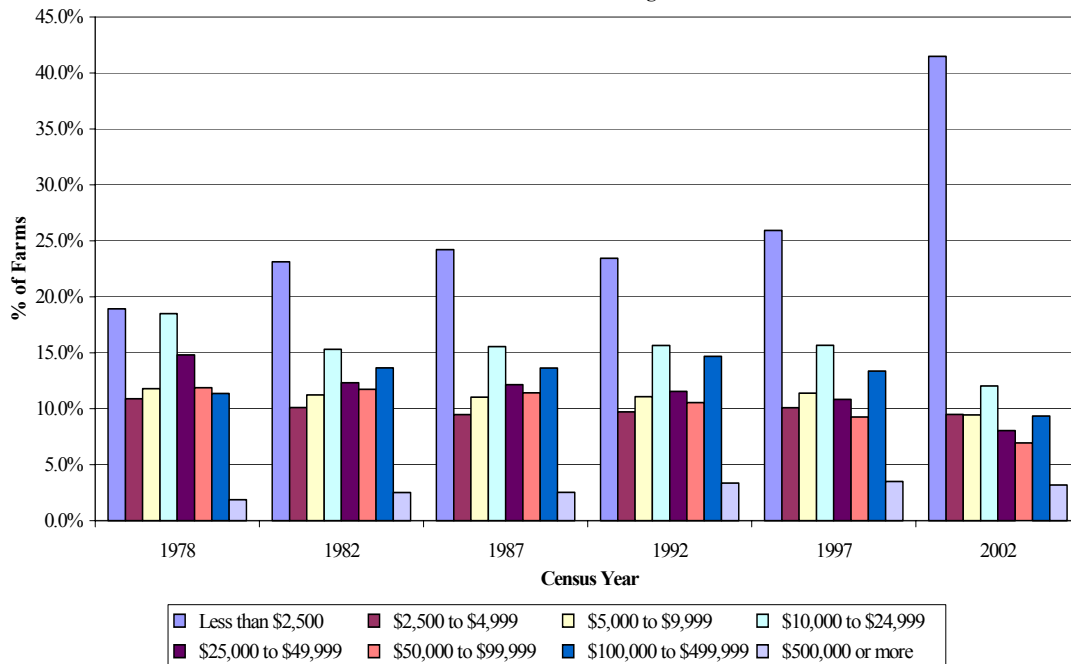
\*Data was not available for all categories in 1974



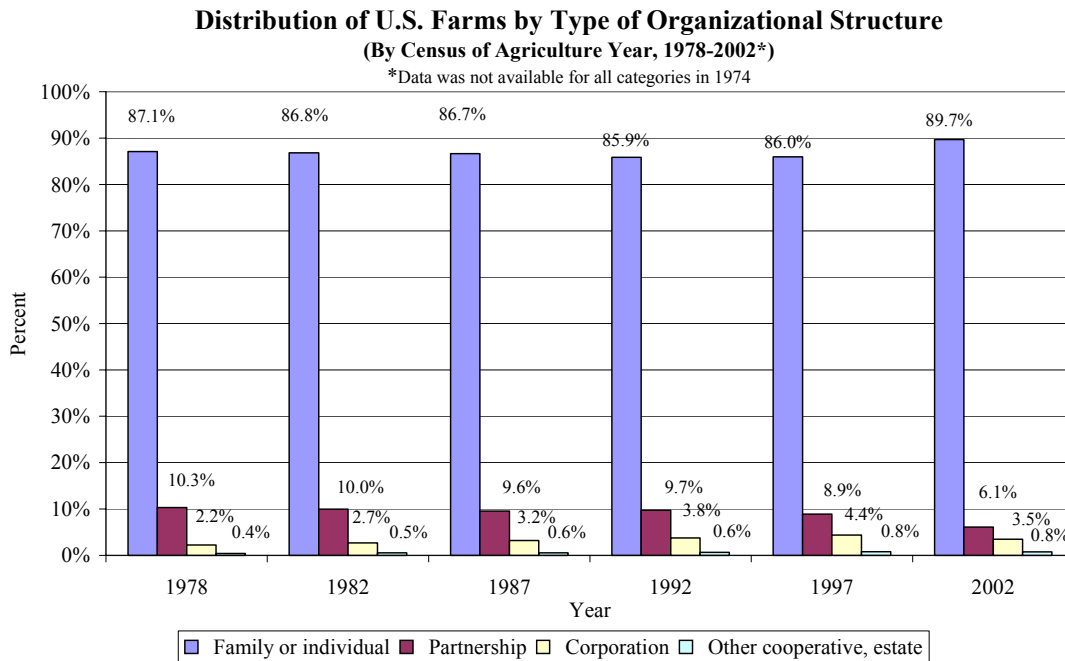
**Figure 5. The Distribution of U.S. Farms by Market Value of Sales Category**

**Distribution of Colorado Farms by Value of Sales Category**  
**(By Census of Agriculture Year, 1978-2002\*)**

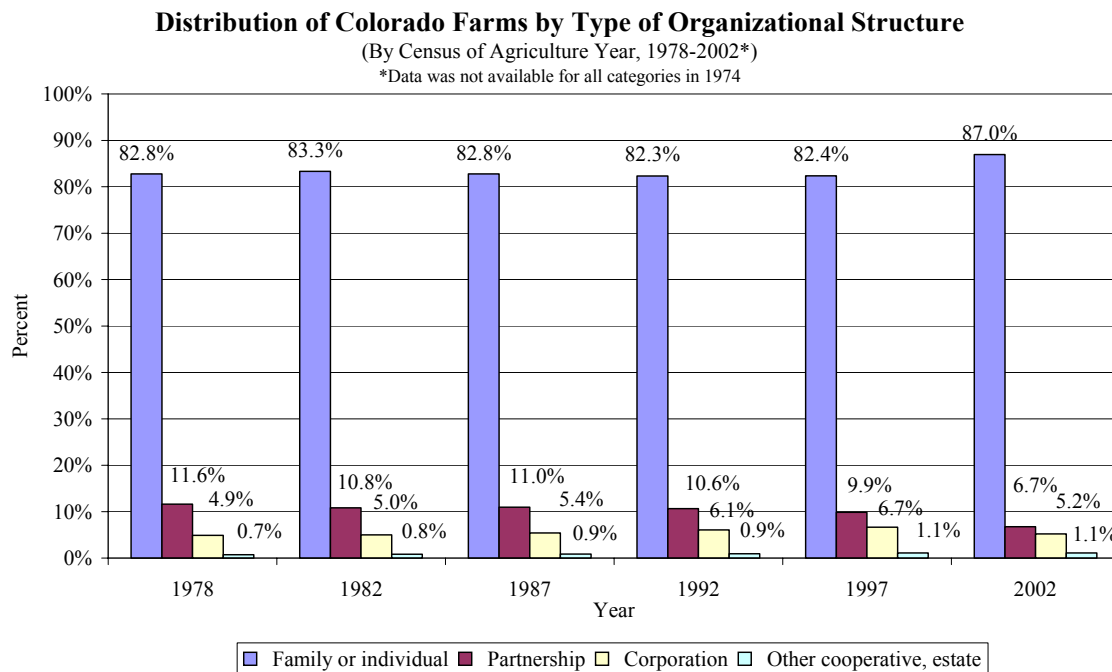
\*Data was not available for all categories in 1974



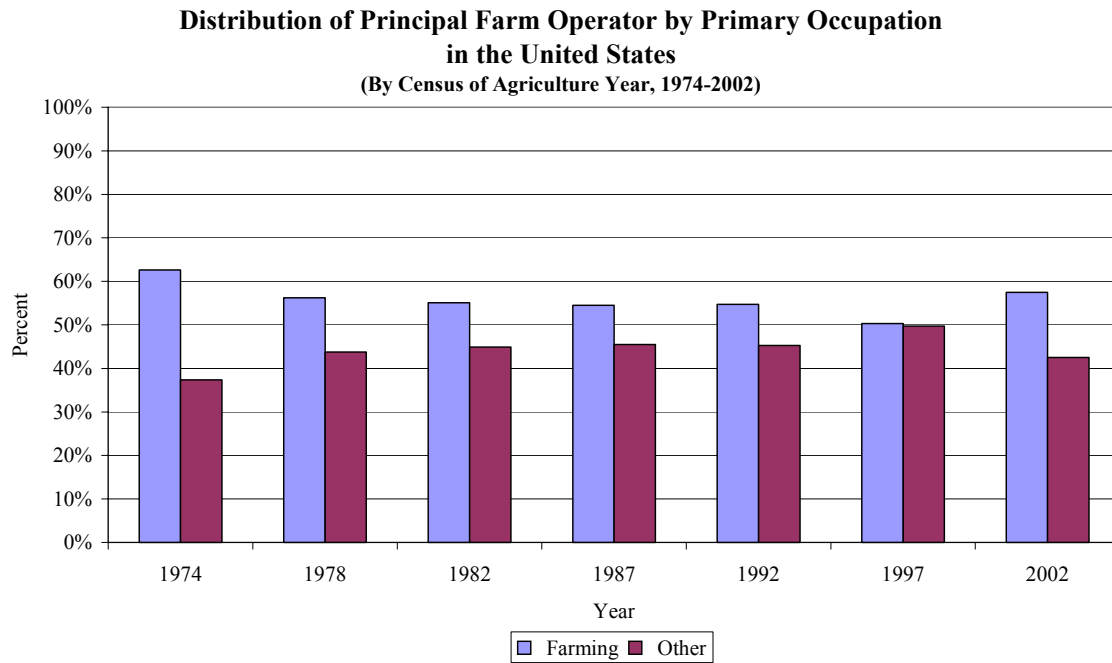
**Figure 6. The Distribution of Colorado Farms by Market Value of Sales Category**



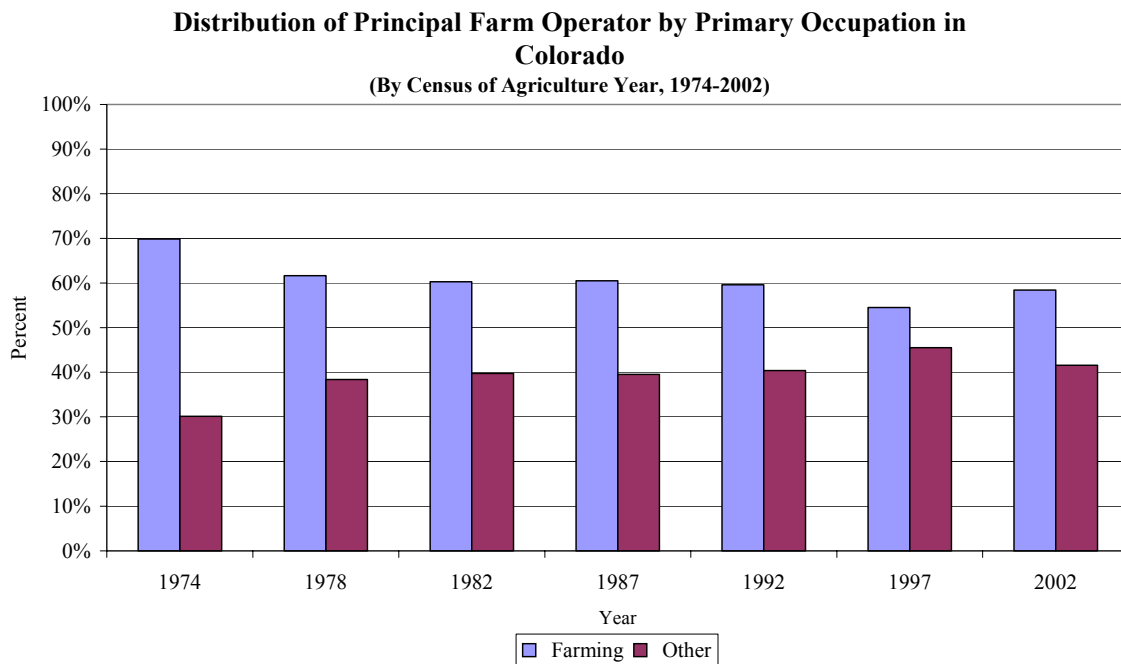
**Figure 7. Distribution of U.S. Farms by Type of Organizational Structure**



**Figure 8. Distribution of Colorado Farms by Type of Organizational Structure**



**Figure 9. Distribution of Principal Farm Operator by Primary Occupation in the United States**



**Figure 10. Distribution of Principal Farm Operator by Primary Occupation in Colorado**